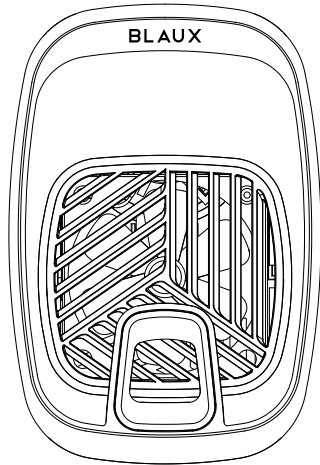


BLAUX IN-HOME

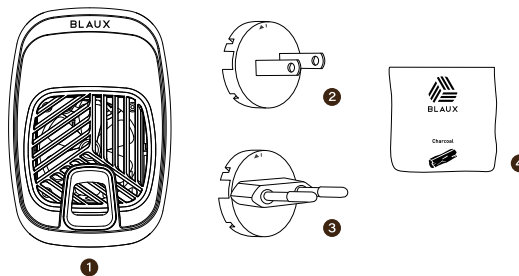


DEODORIZER

ACTIVATED CHARCOAL

Package Contents:

- 1 1 x Blaux In-Home Deodorizer (the device)
- 2 1 x US Plug
- 3 1 x EU Plug
- 4 1 x Charcoal Pouch
- 5 1 x User Guide



IMPORTANT SAFETY INFORMATION

Caution: Do not use device if there is obvious damage.

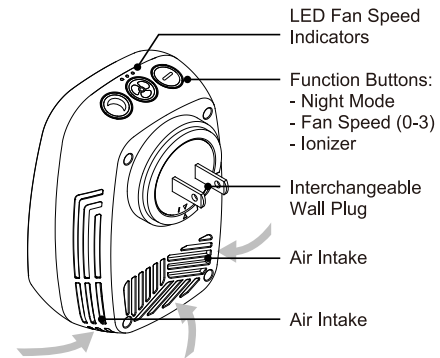
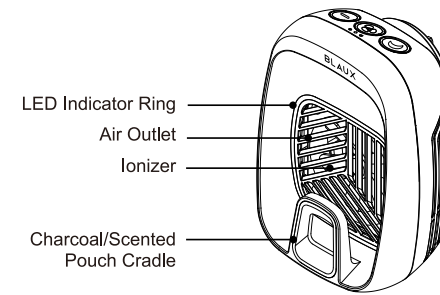
Warning: Do not wash, modify or open activated charcoal pouch

Important Instructions Before Use

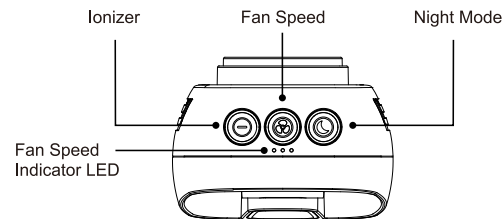
1. Device should only be used for the intended purpose as outlined in the instructions.
2. Do not expose device to moisture or extreme heat.
3. Do not submerge device underwater.

1

Indications:



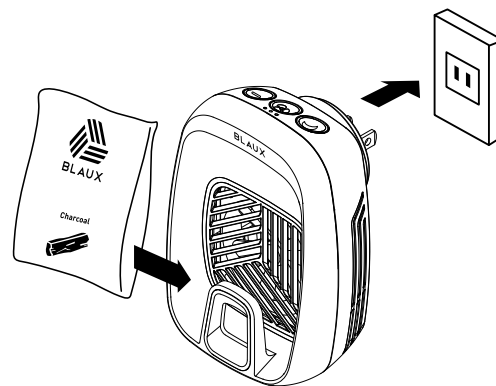
2



Mode/ Button	Mode		
	LED	Function	Description
Fan Speed	Button LED Ring (Blue Color)	Controls the device on/off & Fan Speed	<ul style="list-style-type: none"> The middle Button is the Fan on/ off button. The Fan speed will change each time you press it. It has 4 different mode: High, Medium, Low and Fan Off (Fan speeds are indicated by the 3 LEDs: 3 dots = High, 2 dots = Medium, 1 dot = Low and 0 dots = Off)
Ionizer	Button LED Ring (Blue Color) + Air Vent LED Ring (Blue Color)	Controls the ionizer on/off	<ul style="list-style-type: none"> The left button controls whether the ionizer is switch on/off. The ionizer can only work if the fan is on. When the fan is off, the ionizer will also turn off.
Night Mode	Button LED Ring (Blue Color)	Automatically set to low fan speed and LED ring is off. Ionizer optional.	<ul style="list-style-type: none"> The right button controls whether Night Mode is on/off. To deactivate Night Mode, either press the button again or any other button. In Night Mode: Fan is automatically set to low and all LEDs will be off except for Night Mode button. Ionizer will be on only if it was activated before Night Mode is pressed.

3

How To Use:



1. Make sure you use the correct regional plug before use. Simply place the plug according to arrow indications and rotate to click/lock. To remove, press the release tab below to rotate plug off.
2. Place the charcoal/scented pouch into the cradle.
3. Press the mode button that you want to start with. (Fan speed/ Ionizer/Night Mode)
4. You can switch to different pouches while the device is on. Just be careful with the amount of force used while plugged in.

4

Indication to change the charcoal bag:

LED	Function	Description
Air vent LED light ring turn to RED	Reminder to replace insert	<ul style="list-style-type: none"> End-of-life reminder for insert, a new replacement insert is needed. To reset the insert reminder after insert replacement, press and hold the fan button for 2 seconds, the RED LED light will blink 3 time. The insert reminder function is now reset for the new insert.

Technical Specifications

Power Voltage	110-240V, 50/60Hz, 0.3A
Air Volume	12 CFM (Cubic Feet per Minute)
Dimensions	2.99 in(W) x 2.87 in(D) x 4.41 in(H)
Replaceable Pouch	Activated Charcoal / Pacific Linen / Yuzu Fresh / Lavender

CE The device complies with the European Directives 2014/30/EU.

At the end of its service life, this product may not be disposed of in the normal household waste, but rather must be disposed of at a collection point for recycling electrical and electronic devices. The materials are recyclable according to their labelling. You make an important contribution to protecting administration where the appropriate disposal facility is located. Subject to change.

5